

[online newsletters](#)[subscribe or unsubscribe](#)

le bateau-feu

the monthly newsletter from Dunkerque-Port #77 - march / april 2014

[MEETING](#)[Comment](#)[Like](#)

INTERVIEW WITH MARC BOREL, SALES REPRESENTATIVE AT SAGA FRANCE

The leading specialists of breakbulk transport (including heavy lifts) will be at Breakbulk Antwerp in Belgium from 13 to 15 May. This major trade fair, which attracts 200 exhibitors and 5,000 visitors every year, has also become an unmissable event for Marc Borel, sales representative at SAGA France.



Can you tell us about the exceptional consignment which you had to manage last February?

MB : From 3 to 5 February, at Quay F12, Barra SNM loaded the components of a Mitsubishi power plant on board the Combi Lift Palabora (chartered by BOLLORE LOGISTICS) for San Diego in the USA. This consignment of 1,400 tonnes comprised 250 loads, including a gas turbine, a generator of 295 tonnes and a rotor of 50 tonnes. Once assembled, the parts will form a power plant to supply electricity to a city of

500,000 to 700,000 people. The plant, built in Japan, arrived at Dunkirk eight years ago and has been stored in closed wharfside sheds. These sheds can store loads up to 8m wide and 7m high, and have a bearing capacity of 400 tonnes. This storage facility for very large loads is a major advantage for Dunkirk.

Which sectors does your company work in?

MB : The SAGA Group was formed in 1919 and is one of the leading operators in transport organisation, handling and logistics. We are well known for our mul-

ti-industry and multi-sector service offer. SAGA covers the entire logistics chain and we can offer a complete service to our clients: freight forwarding, handling (stevedoring and on land), distribution (courier and express), contractual logistics. Over the years SAGA has followed a policy of substantial investment in many African countries at the same time as building up our network in mainland France, the Overseas Departments and Asia. Our operations became part of the BOLLORE Group's transport division in 1997.

Your work is freight forwarding: what does this involve?

MB : Freight forwarding is a profession that actually combines several others. The freight forwarder organises the transport of goods and has it carried out under his responsibility; he has an obligation of result from departure at the factory to the final destination. Freight forwarders have to take enormous risks in terms of finance and personnel; we also manage all the administrative and physical operations in-

volved in transporting the goods. The freight forwarder is in contact with many operators, from stevedores to boilermakers and including packers: we work with Customs to manage the various taxes and put in place specific customs procedures, and with the Department of the Environment, Development and Housing (DREAL) for permits and so on.

What other projects are you working on?

MB : We regularly have industrial projects with clients such as CMP, ENTREPOSE and INEO, and we manage the transport of certain investments of the ROQUETTE Group. At the moment we are working with the MITSUBISHI Group so that Dunkirk will become the permanent platform for their dismantled power plants, half-way between Asia and the end clients in the eastern USA. Perhaps this will lead to new services calling at Dunkirk...

Breakbulk EUROPE 331 HALL4
VISIT DUNKERQUE-PORT ON STAND

[ARRIVAL](#)[Comment](#)[Like](#)

ISABELLE DEVINNE, NEW CONTRACT MANAGER IN THE COMMERCIAL DIVISION

Isabelle Devinne has joined the Commercial Division of Dunkerque-Port. Her task will be to develop breakbulk traffic, industrial projects, and bulk liquids and solids. She will also be responsible for all types of traffic to the Paris region as well as the Pas de Calais, Somme and Oise departments, Burgundy, Central

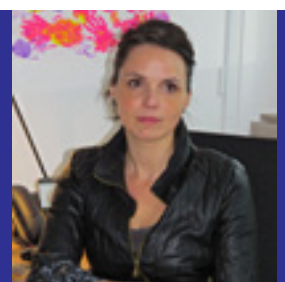
France and the Haute Marne. With a Master's in Port Management from the Opal Coast University of Dunkirk and one in International Trade from the University of Lille 1, she worked as sales representative for the Port of Lille and then at SAGATRANS before spending seven years as sales representative of UASC at Dunkirk.

Isabelle Devinne

Contract Manager,
Business Development

Tel: +33 (0)3 28 28 77 24
Mobile: +33 (0)6 16 12 19 72

Email: idevinne@portdedunkerque.fr





• INVESTMENT

Comment

Like

Contact : Benoît Masure

bmeasure@dmterminal.com

Tel : +33 (0)3 28 24 90 10

DMT INVESTS 2 MILLION EUROS IN NEW EQUIPMENT

Interview with Benoît Masure, General Director of Dunkerque Multibulk Terminal (DMT)

DMT has just purchased a new shiploader which was inaugurated on 6 March with the loading of a barge of slag. What is this acquisition for?

BM : This new machine, which operates with a throughput of 400 to 500 tonnes per hour, is designed to load small-capacity ships (up to about 6 or 8,000 tonnes) as well as waterway barges. It is also equipped with a fully dedusted hopper, with filters, which allows us to empty the trucks coming from

silos and warehouses completely in perfect environmental conditions. So we will now be able to handle all sorts of sensitive products (fertilizer, sunflower pellets, wood pellets, etc) and load them without placing these products on the ground. This new shiploader supplements our existing cranes, and means we can offer a wider range of services to our clients. DMT, which already owns a dock crane, is currently purchasing a high-capacity crane which will be operational at the end

of June. This second crane, a mobile one, will triple the loading throughput of the DMT quay and operate at more than 1,000 tonnes per hour; most importantly, it will be able to load ships of 60,000 tonnes. We will also be able to discharge barges on the extension of the waterway quay. Our aim in the very short term is to operate specialist quays, with a waterway quay and a maritime quay, to develop these two activities significantly.

• INSTALLATION

Comment

Like

INSTALLATION OF FLANDRES BÉTON



On 31 January Pieter De Brabandere, Manager of FLANDRES BÉTON, a company of the Belgian family-owned DE BRABANDERE Group, and Christine Cabau Woehrel, Chair of Dunkerque-Port's Executive Committee, officially signed the permit for temporary occupation of GPMD land, with a view to the setup of a concrete plant. This installation, representing an investment of 2 M€, should generate additional maritime traffic in sand (approximately 50,000 tonnes), as well as rail traffic in limestone from the Boulonnais Quarries (some 30,000 tonnes a year). This new facility is scheduled to open in September 2014.

• MISSION

Comment

Like

INFORMATION MEETING AT ST PETERSBURG

On Thursday 13 March, an information meeting to present the Port of Dunkirk was held at the Astoria Hotel in St Petersburg, Russia, attended by the Consul General of France to St Petersburg, Mr Thibaut Fourrière. The purpose of this meeting was to highlight the geographic situation of Dunkirk, which is France's leading port for trade with the Baltic in containers and breakbulk and the foremost French port for containerised fruit imports, and which offers strong potential for the development of exports to Russia. 160 people (partners, potential clients and other contacts) attended the event.



• LINE

Comment

Like

NEW WATERWAY SERVICE FROM DUNKIRK



On 25 February Contargo Container Escaut Services SAS (CCES) started up a new regular service between Valenciennes and Dunkirk, the DV1 (Dunkirk-Valenciennes 1). The rotation will initially involve one barge a week. This new CCES service will supplement Dunkirk's waterway links in the region, following the startup of the Nord Port Shuttle (NPS) serving Lille and Dourges at the end of 2013. The first rotations will be carried out by the Enaxor barge which can carry 28 TEU (20' Equivalent Units), although the capacity of the barges can be altered to suit requirements. The service offers a transit time of Day A / Day B with schedules set to synchronise with the Asia-Europe container services calling at the Port of Dunkirk: MSC's Lion service and the FAL 7 service of CMA CGM.

Contact : Gilbert Bredel - bredel.cces@orange.fr Tel : +33 (0)6 27 27 29 61 / +33 (0)3 27 21 99 22

VISIT

Comment

Like

SENEGALESE DELEGATION



A delegation from Dakar in Senegal visited Dunkerque-Port on Tuesday 25 February. Its members were Mr Gueye, General Director of Union Nationale des Commerçants et Industriels du Sénégal, Mr Diallo, Chairman of Union Sénégalaise des Entreprises, Mr Sarr, General Director of Société de Transit, de Transport et de Manutention, Mr Ndiaye, Permanent Secretary of Union Nationale des Commerçants et Industriels du Sénégal, Mrs Ba Niang, Technical Consultant to the General Director, Mr Sy, Technical Consultant for Communication, and Mr Ba Momar, Commercial Director of the Port of Dakar. The group visited the port and the Dunfresh and Dailyfresh warehouses

MISSION

Comment

Like

CONSULAR ECONOMIC MISSION TO INDONESIA AND SINGAPORE

François Soulet de Brugière, Chair of Dunkerque-Port's Board of Trustees, accompanied the consular economic mission of the Northern France International CCI to Indonesia and Singapore, from 8 to 15 March 2014. The programme of the mission, led by the Opal Coast CCI Chairman Jean-Marc Puissesseau, included lectures and meetings with French companies based in Singapore, the port authorities, and the international logistics operator SDV. In Indonesia's province of Java East, where a letter of intention for economic partnership was signed, workshops focussed on projects involving the economy of the sea, port equipment, overland transport, food processing, and distribution.



TRAINING

Comment

Like

TRAINING IN MULTIMODAL TRANSPORT



The multimodal transport training specialist, *Centre Atlantique du Shortsea Shipping Européen (CASE)* offers 3 programmes:

1. Northern circuit

Dunkirk, Dover, Calais, Zeebrugge

3.5 days: 8 to 11 April

This training itinerary covering the Opal Coast includes a tour of the port of Dunkirk on board the «Texel» launch, and crossing the Channel to visit the working areas of a ferry and discover Dover, one of the world's busiest Shortsea Shipping ports. You will also visit the port of Zeebrugge, meet professionals, and follow theory sessions and case studies led by experts in the subject.

2. Southern circuit

Nantes, Gijón, La Rochelle

3.5 days: 12 to 15 May 2014

Most of this course takes place on board the ferry on the maritime motorway between Montoir and Gijón, Asturias, or within the ports of La Rochelle, Nantes-Saint Nazaire and Gijón. The training itinerary combines theoretical and practical learning (site visits and meetings with professionals).

3. Waterway circuit

1 day

For a more concentrated introduction to the possibilities and constraints of multimodal transport, CASE offers a short one-day course, consisting of 6 hours' training on the inland waterway transport sector. Available in Rouen, Lille, Toulouse, Strasbourg, Dunkirk, Le Havre and Lyon.

CASE is a network of committed partners, formed of La Rochelle Business School, the Major Seaports of La Rochelle, Nantes-Saint Nazaire and Dunkirk, and the port community of Gijón in Spain. As an EEIG, CASE has the support of eight European Shortsea Promotion Centres (Germany, Belgium, Spain, Denmark, France, Great Britain, Ireland and Portugal), trade associations both French (AUTF, TLF and Armateurs de France) and European (European Shippers' Council and CLECAT), as well as the French Maritime Cluster, the French Seaports Association, French Waterways and Lille Transport & Logistics School.

Contact: contact@case-optimodal.eu www.case-optimodal.eu

MEET DUNKERQUE-PORT SOON AT:

- **Intermodal Sao Paulo**, Brazil, 1 to 3 April
- **SITL Europe**, Paris-Villepinte, France, 1 to 4 April

- **Transrussia Moscou**, Russia, 22 to 25 April
- **Multimodal Birmingham**, UK, 29 April to 1 May

- **Breakbulk Anvers**, Belgium, 13 to 15 May
- **Medfel Perpignan**, France, 13 to 15 May



Dunkerque-Port : port 2505 - 2505 route de l'Ecluse Trystram BP 46534 - 59386 Dunkerque Cedex 1 - France - Tél : +33 (0)3 28 28 77 20
Communication & Relations Publiques - communication@portdunkerque.fr

