


[online newsletters](#)
[subscribe or unsubscribe](#)


le bateau-feu

The monthly newsletter from Dunkerque-Port

#82 – March 2015

• TRANSPORT

[Comment](#)

[Like](#)

DUNKIRK CONFIRMS ITS IDENTITY AS A MULTIMODAL PORT

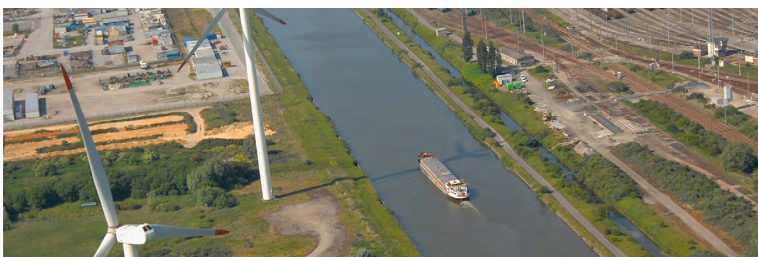
The share of alternative transport modes at Dunkerque-Port has reached 49%, an increase of 1% over 2013.

The modal share of rail transport is 30%. This mode naturally relies on historic sectors such as coal and ore, but now offers promising prospects in combined transport, as can be seen in the doubled frequency of the container shuttle to and from the Greater Paris area (Bonneuil). Grain procurements have also soared in recent months, extending the hinterland of the Port of Dunkirk to new markets. In consolidating their overland traffic at Dunkirk, shippers are making use of the largest maritime infrastructures available.

of this mode in coming years.

Including the traffic of the maritime industrial area, rail traffic reached 13.4 MT in 2014, strengthening the Port's position as the leading freight hub in France.

Waterway traffic exceeded 3 MT for the first time in 2014, marking Dunkirk more than ever as the foremost inland waterway port of the Nord-Pas de Calais region



Waterway transport also continues to develop, with a modal share up one point at 16%. The main traffic concerned is grain (1.19 MT), a sector in which the modal share is as high as 52%. Combined transport is growing too, and should experience a new boost in 2015 with the deployment of new services for northern France. The volumes carried by the Nord Ports Shuttle (NPS), which started up in November 2013, became permanent in 2014.

Finally, pipeline transport now accounts for 3% of traffic, in particular since liquid bulk operators have connected to the Trapiil national network.

The opening of the LNG terminal should contribute to the reinforcement

• EVENT

[Comment](#)

[Like](#)

MEDAL AWARD

Saturday 14 February 2015 saw the first call of the Ocean 3 service at the Flanders Terminal, when Dunkerque-Port's CEO Stéphane Raison awarded the Port Medal to the Master of the CMA CGM AQUILA, Zeljko Siljac.



• REPAIR

[Comment](#)

[Like](#)

MAKEOVER FOR THE «MARION-DUFRESNE-II» AT DUNKIRK

On Saturday 14 March the famous research vessel «Marion-Dufresne-II» arrived at the DAMEN ship repair yard in Dunkirk for an upgrade of its scientific instruments and a major overhaul of its hull and engines.



Owned by CMA CGM and chartered by the French Southern and Antarctic Territories (TAAF), the «Marion-Dufresne-II» is one of the jewels of the French oceanographic fleet. Built in Le Havre in 1995, 120.50 metres long and with a draught of 6.95 metres, this ship has a crew of 50 and can carry up to 110 passengers. Boasting 650 m² of laboratory space, a multi-beam echo sounder, a sediment corer and winching systems, the «Marion-Dufresne-II» conducts oceanographic research under the auspices of the Institut Polaire Paul-Emile Victor and provides logistics services in the French Sub-Antarctic islands under the responsibility of the French Southern and Antarctic Territories (carrying residents and visitors to the Southern Territories, carrying personnel to and from the bases, transporting containers and heavy lifts, etc). This extremely versatile ship is also a helicopter carrier and a tanker.

The project awarded to DAMEN shipyards is impressive and will take four months. It will include modification of the propulsion system, installation of a new system for monitoring and control of the engines, upgrading of the navigational instruments, and modernisation of the scientific equipment. The makeover will extend the service life of the «Marion-Dufresne-II» by some 20 years.

This contract demonstrates the know-how and versatility of the DAMEN shipyard and its staff of 160. Equipped with two dry docks, the largest of which can accommodate Capesize ships with 180,000 t deadweight tonnage, the yard also has a floating dock to berth the largest ferries in service and 650 metres of repair quays, as well as 22,000 m² of modern workshops.

TRAINING

Comment



Like

MULTIMODAL TRANSPORT TRAINING BY THE CENTRE ATLANTIQUE DE SHORTSEA EUROPÉEN



The Centre Atlantique de Shortsea Shipping Européen (CASE) organises ongoing training in multimodal transport for professionals, shippers and operators.

The courses are given by experts and cover the waterway, rail and short-sea modes.

In association with Grand Port Maritime de Dunkerque, CASE unlocks the mysteries of multimodal transport. The training courses will teach you more about the operators and structures of these transport modes and give you a better understanding of the realities on the ground

They also offer post-training tools:

- ♦ The observatory, which is constantly updated with interviews with experts and news about multimodal transport.
- ♦ The e-learning platform, a forum for discussion with a moderator and everyone who has followed the courses.



DATES OF NEXT COURSES AT DUNKIRK:

- ♦ 18 to 21 May
- ♦ 30 June to 3 July
- ♦ 7 to 10 September
- ♦ 19 to 22 October



More information: www.case-optimodal.eu or 05.16.19.63.35



EVENT

Comment



Like

DONATIONS TO LOCAL ASSOCIATIONS



The Staff Committee of Dunkerque-Port collected €3,350 during the 2015 «Chapelle du Port» event of the Carnival celebrations. Donations were given to the «Vent en Poupe» and «Le Relais des Mères» associations and to Zuydcoote Maritime Hospital.

TRADE FAIRS

Comment



Like

TRADE FAIRS

-Port will participate in the following trade fairs and shows:



**Intermodal
Transamerica Expo Centre
Sao Paulo, Brazil
7 to 9 April 2015**



**Transport Logistic
Messe Munich
Munich, Germany
5 to 8 May 2015**



**Multimodal
NEC Birmingham,
Birmingham, UK
7 to 9 April 2015**



**Breakbulk
Antwerp Expo
Antwerp, Belgium
18 to 21 May 2015**



**Medfel
Perpignan - France
21 to 23 April 2015**